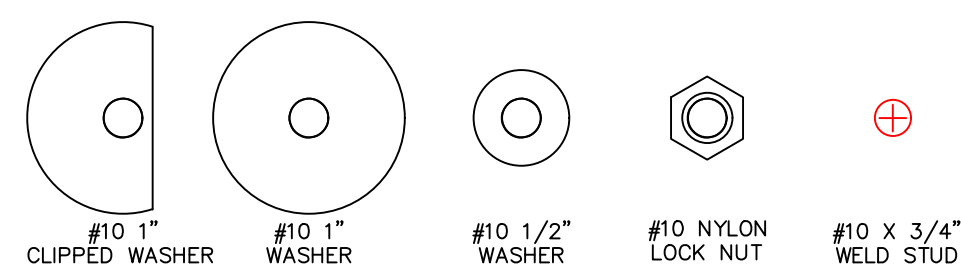




LEGEND

- ADAPTER PLATE (11 GAUGE)
- BACK PLATE (11 GAUGE)
- BACK PLATE (11 GAUGE)
- MOUNTING STUD (10-32x3/4")
- SEALING GASKET
- EXISTING HMI BEZEL
- EXISTING HMI CUTOUT
- NEW HMI BEZEL



THIS DRAWING IS PROPERTY OF HMI ADAPTER PLATE, LLC. THIS DRAWING MAY ONLY BE USED FOR MATERIAL SUPPLIED BY HMI ADAPTER PLATE, LLC.

Existing HMI
 Siemens MP 277 #MP 277 10in Key
 Bezel:19.016 [483] W x 12.205 [310] H Cutout:17.087 [434] W x 11.457 [291] H

New HMI
 Siemens Comfort #KP1200 Comfort
 Bezel:17.874 [454] W x 11.378 [289] H Cutout:17.087 [434] W x 10.59 [269] H

REVISIONS		DATE	BY	CHKD
1	INITIAL ISSUE	03/24/2023		
2	Changed CO height from 289 to 269	3/5/2023		

Dwg No: D062171 AP4036-4032-SM
 Date: Mar 24 2023 10:07AM
 Unit: INCHES

www.hmiadapterplate.com