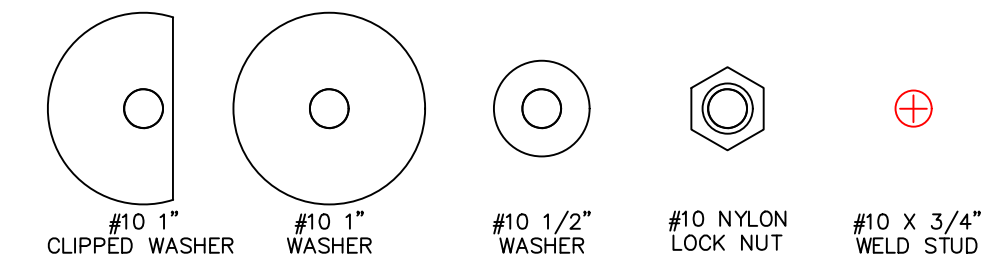


- LEGEND
- ADAPTER PLATE (11 GAUGE)
 - BACK PLATE (11 GAUGE)
 - MOUNTING STUD (10-32x3/4")
 - SEALING GASKET
 - EXISTING HMI BEZEL
 - EXISTING HMI CUTOUT
 - NEW HMI BEZEL



THIS DRAWING IS PROPERTY OF HMI ADAPTER PLATE, LLC. THIS DRAWING MAY ONLY BE USED FOR MATERIAL SUPPLIED BY HMI ADAPTER PLATE, LLC.

Existing HMI: Allen Bradley #2711P-B10**** Bezel Size: 15.709"W x 9.764"H Cutout: 14.764"W x 8.819"H
 New HMI: Allen Bradley #2711P-B10C22A9P Bezel Size: 15.157"W x 9.921"H Cutout: 13.189"W x 8.819"H

REVISIONS		DATE	DRAWING NAME
1	INITIAL ISSUE	01/26/2023	AP3010-3013-SM

INFORMATION: Jan 26 2023 6:02AM

UNIT: INCHES

